

MyEvaluation

How would I go about an evaluation?



CWTS

Robert Tijssen

***Centre for Science and Technology Studies (CWTS)
Leiden University
Netherlands***

tijssen@cwts.leidenuniv.nl

Presentation at the brainstorming meeting on Evaluating Research Outcomes and Impacts
EFC - European Forum on Philanthropy and Research Funding, Brussels 17 April 2008

MyEvaluation

evaluators' challenge

- *Evaluation systems, evaluations and evaluators must demonstrate that they offer (more) cost-effective, credible and accurate information relative to traditional methods or 'do nothing' options*
- *Dangers of wrong or biased indicators and interpretation of results out of context*
- *Relation between performance indicators and evaluation is a fundamental requirement for understanding of context, goals and relationships which link goals to effects*
- *Identify and use best practices and expertise from members of the specialist evaluation community*

MyEvaluation

general methodological model ?

Clearly specified and measurable objectives; joint commitment to monitor and evaluate !

START RESEARCH (RELATED) ACTIVITIES

Interim progress report forms (only once/mid-term?)

Concise forms; agreed performance indicators (where applicable); (semi-)closed questions; backward and forward looking perspective

Self-evaluation forms (mid term and/or prior to final payment ?)

Concise forms; agreed performance indicators (where applicable) + additional indicator(s) suggested by grantee ; (semi-)closed questions; backward and forward looking perspective

COMPLETION OF RESEARCH (RELATED) ACTIVITIES

External evaluation (sample of selected 'show' cases ?)

3-5 years after completion of research; focus on longer term outcomes and effects; inputs from external experts and other independent sources (bibliometrics); focus on agreed performance indicators + additional indicator(s) suggested by grantee

Designing a measurement model #1

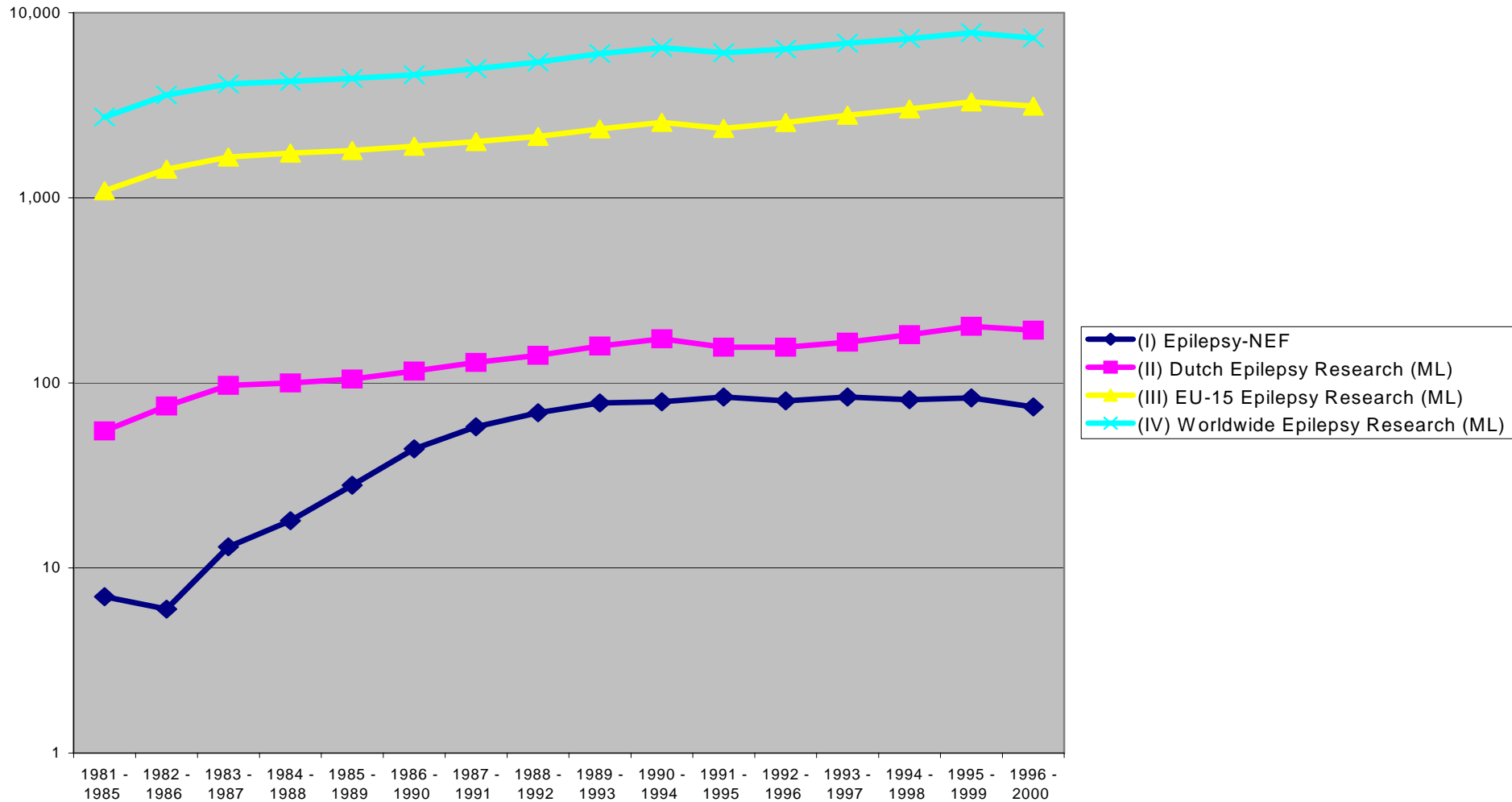
- The rationale or motivation for evaluation has to be made clear at the outset
- Link indicators, benchmarks, baselines, and targets to overall/specific goal(s) of the foundation (grants)
- Indicators should be context-dependent (fields of science, research objectives)
- Benchmarks and targets should represent reasonable aspirations (mid term or longer term)
- ‘Systemic’ indicators and benchmarks should be developed for time-series rather than snap-shots

Designing a measurement model #2

- Take into account performance optimizing behavior (e.g. strategies by researchers to increase their research output counts)
- Differentiate between measurement of the performance of the system, and performance of the grants (or other ‘interventions’)
- Considered a benchmark to measure performance against (1) local or national standards, (2) international standards

CWTS study of epilepsy research (2000)

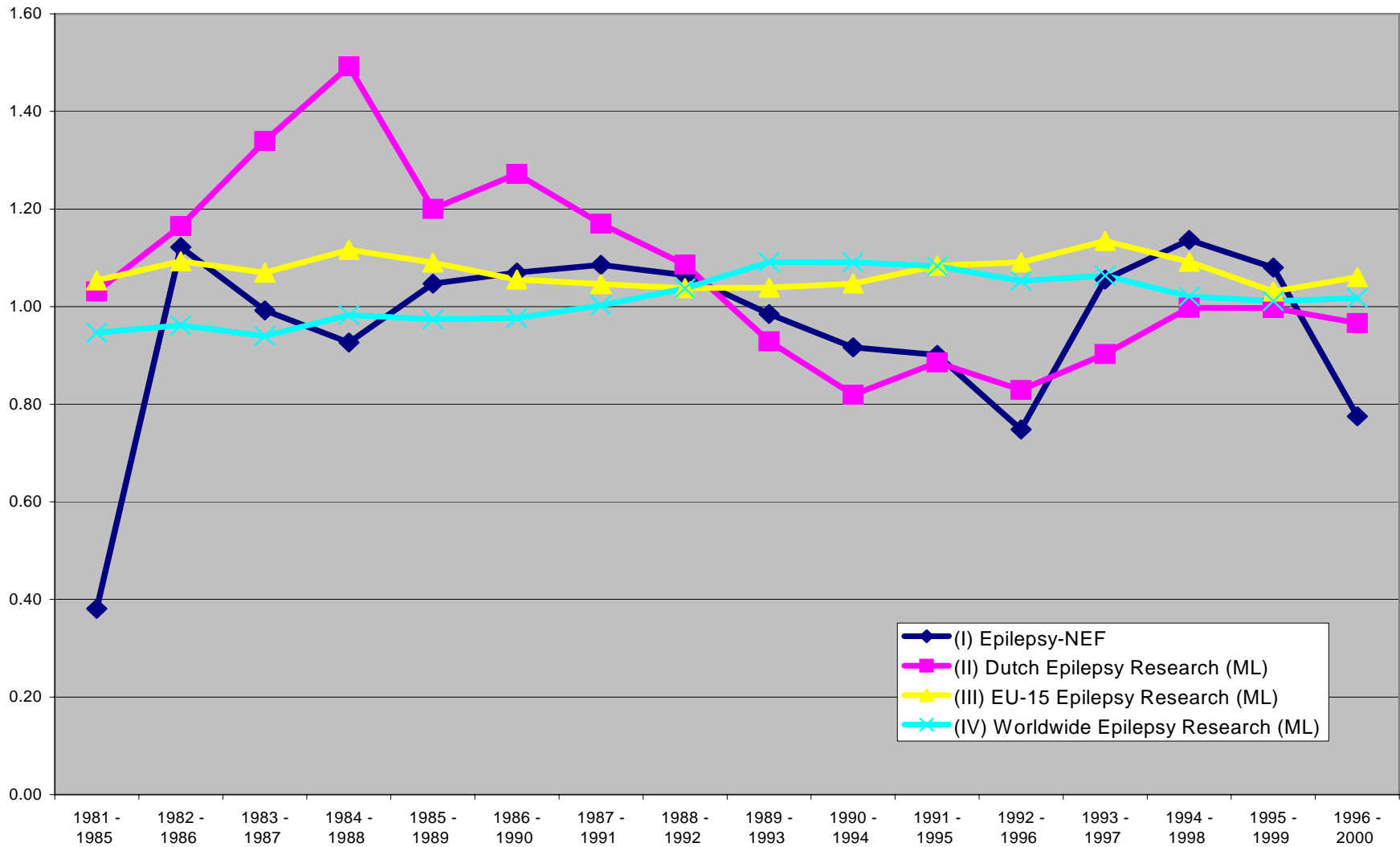
Publication output trends (P, log scale)



NEF – Netherlands Epilepsy Foundation
ML : Medline-defined research publications

Citation impact trends in Epilepsy research

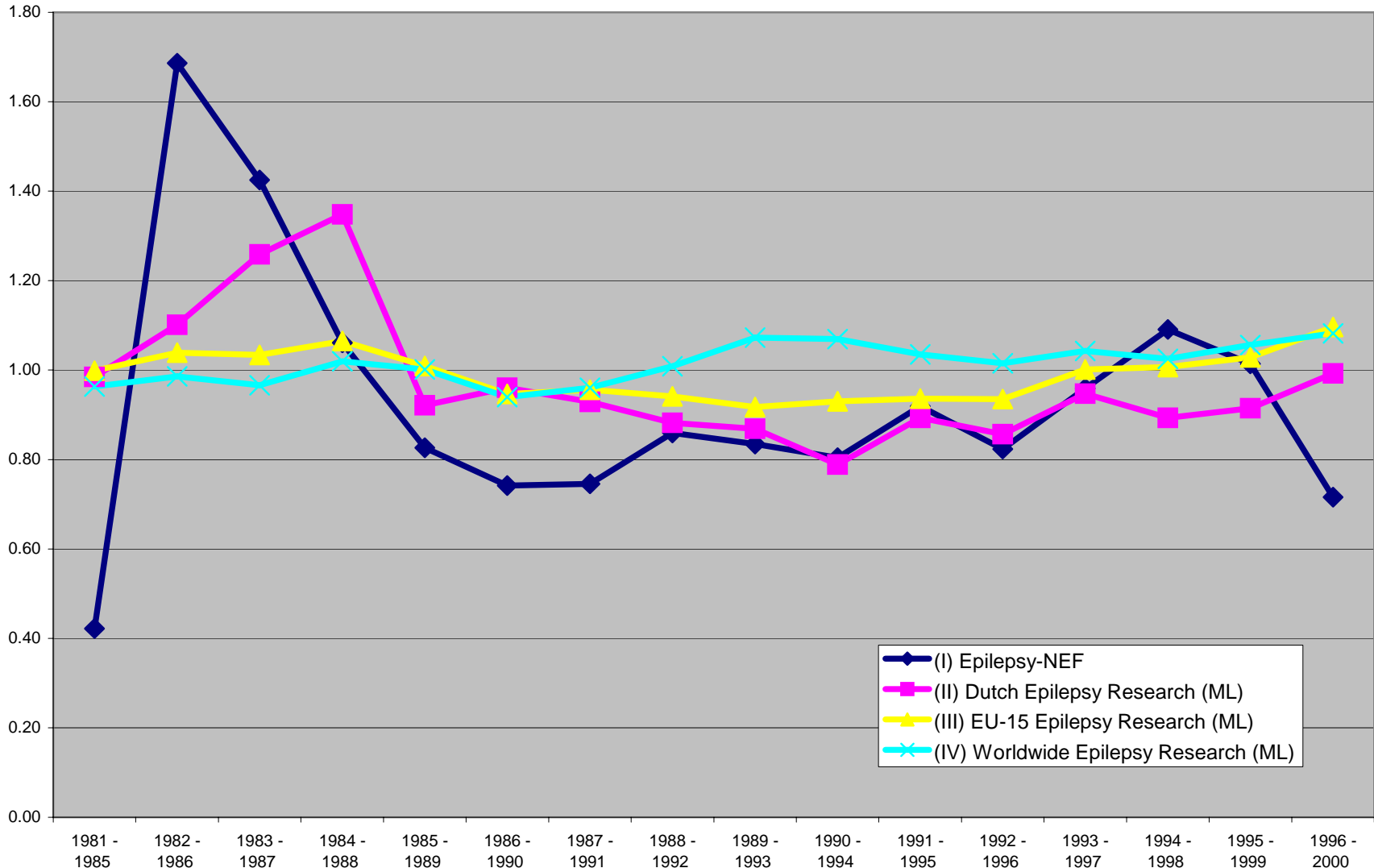
Average number of citations per paper (CPP)



NEF – Netherlands Epilepsy Foundation
ML : Medline-defined research publications

Citation impact trends in Epilepsy research

Field-normalised average number of citations per publication (CPP/FCSm)



NEF – Netherlands Epilepsy Foundation
ML : Medline-defined research publications

Towards best practices



Is standardization the answer?

Important to have a generally accepted set of evaluation tools and continue to develop new approaches

Should we develop methods specifically designed for us?

Engage in pilot studies to develop and test (modified) methods that are already in use elsewhere

Or is a focus on international “best practices” in evaluation methods or mechanisms the answer?

Context-dependent methods and concepts are of secondary relevance

Should we go for flexible, adaptive methods and user-producer interactivity?

Exploiting multiple sources of information, capacity building, and collaborative work with domestic and international experts, is the key

What are the right questions right now?

Central questions

To what degree are our objectives amenable to evidence-based evaluations and unambiguous performance measurements?

How can a constructive dialogue be promoted between foundations, stakeholders and evaluation experts towards the most relevant questions about (common) evaluation tools and techniques?

How do I get my evaluation methodology right?

Is there a 'best' basket of analytical methods, performance criteria and indicators?

Which offer the best value for money?

Which available data sources am I not using (to their full potential)?

Will the methodology produce the right information?

Is the evidence important for (all) stakeholders?

Is the evidence likely to be believed and used?

MyEvaluation

YourEvaluation

OurEvaluation?

Collect and distribute information on international ‘good practices’

Working groups

- Tools, Methods & Metrics
- Evaluation Guidelines and Manual

Evaluation Information Forum

MyEvaluation

YourEvaluation

OurEvaluation?

Quality Assurance Projects

- Peer-reviews and metrics (*conflicts, complementarity and synergies*)
- Improve indicators for measuring research performance (*to avoid too many unintended effects and that focus on quality and not only on quantity*)
- Meta-evaluation of evaluations (*short term and longer-term effects of grants on capability building, scientific excellence, social and economic innovations, European collaboration and integration*)
- ‘Best practice’ trials and pilot studies (*granting procedures, evaluation processes and performance criteria*)

MyEvaluation

YourEvaluation

OurEvaluation?

Evaluation Expertise Network

- Expert and advisory groups
- Training courses; workshops; seminars
- Alignment of databases and information systems at foundations (reviewers, grantees, applicants)
- Liaise with and include other relevant organizations (EC, large non-European foundations)